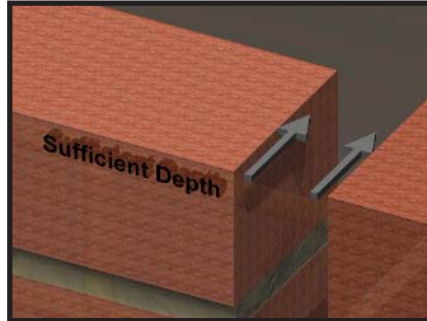
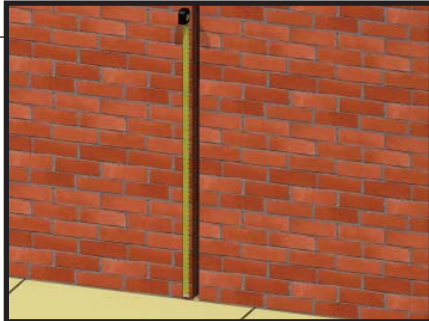


Recommended Tools

Tape Measure / *Sharp Knife* / *Miter Saw* / *Utility Knife* / *Duct Tape* / *Mineral Spirits* / *Clean Cloth* / *Isopropyl Alcohol* / *Margin Trowel* / *Heat Gun*
[Stick Material] [Stick Material] [Roll Material] / *Compressed Air*

Material Sizing

1. Joints must be sized every 5-7 feet (1.524-2.137 meters) to ensure gap opening is uniform and depth is sufficient for the supplied material.



Note:

Allow sufficient depth for the primary sealant and backer rod (if used) as deemed necessary by the manufacturer.

Material Preparation

1. Store material at a minimum of 68°F (20°C) for a minimum of 24 hours prior to installation, regardless of temperature at location of installation.
2. Store materials in a dry, enclosed area. Make sure materials are off the ground and out of direct sunlight.
3. Cutting Details - **Roll Material**
 - Do not make any cuts until ready to install the material.
 - Refer to the **Sealant Installation (Rolls)** section for further instruction on cutting the roll material.

4. Cutting Details - **Stick Material**

- Use a miter saw to make any cuts to the material before removing the clear shrink packaging. All starting and ending pieces must be square to the termination point.
- Use a sharp knife to make any cuts after the clear shrink packaging has been removed.



Tip:

Apply mineral spirits to the knife for a smoother cut.

Warning:

Install the material directly after removing the packaging to ensure the material does not expand past the joint width.

Note:

Refer to the **Seams** section for further instruction on preparing the material.

Important: These instructions are intended as recommended guidelines. Due to the variability of field conditions, selection of the proper material for the intended application and installation are the sole responsibility of the applicator. The manufacturer's published installation procedures shall be followed at all times.

SCHUL INTERNATIONAL COMPANY, LLC ONE INDUSTRIAL DRIVE, PELHAM, NH 03076
TELEPHONE: 800.848.1120 • FAX: 800.998.9105 • WEB ADDRESS: www.sealtiteusa.com

Joint Preparation

1. Verify the joint is clean, sound, and will provide an appropriate surface for installation of the joint sealant.
 - Use compressed air to clean any loose debris from the joint.
 - Apply water or alcohol to a clean cloth and wipe the joint walls to the depth of the sealant material plus 1".
2. Verify that the joint is uniform and repair any spalls prior to installation.
3. Check the material for appropriate length, width, and depth.
 - Supplied material should be pre-compressed to a size smaller than the intended joint opening.
 - Joint depth must allow for the installed material to be recessed in the joint leaving adequate space for the primary sealant and backer rod (if used) to be installed according to the manufacturer's instructions.

Sealant Installation (Rolls)

1. When fully prepared to install, remove the outer lining surrounding the joint material.



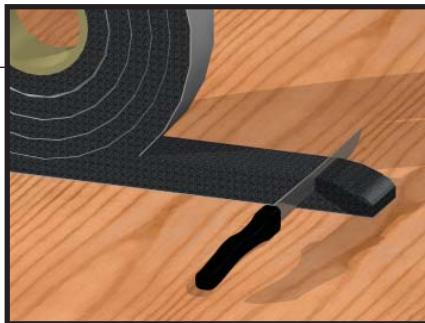
Warning:

Be prepared to install the material immediately once the liner is removed to prevent the material from expanding past the joint width.

Tip:

Material will expand faster when hot and slower when cold. In cold temperatures, store the material in a heated area 24 hours prior to installation. In hot temperatures, store the material out of direct sunlight and not in an enclosed storage container where temperatures may exceed 100° F.

2. Cut off the first and last 1"-2" of material using a sharp knife (utility, etc.).
 - Verify that the material is cut square at both ends for proper seams. (Refer to the **Seams** section for more details)
 - All pieces must be square to the termination point.



Tip:

Mineral spirits can be applied to the blade for a smoother cut.

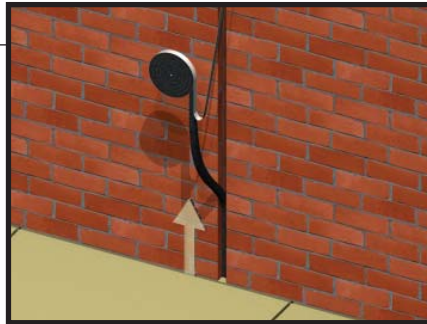
Important: These instructions are intended as recommended guidelines. Due to the variability of field conditions, selection of the proper material for the intended application and installation are the sole responsibility of the applicator. The manufacturer's published installation procedures shall be followed at all times.

SCHUL INTERNATIONAL COMPANY, LLC ONE INDUSTRIAL DRIVE, PELHAM, NH 03076

TELEPHONE: 800.848.1120 • FAX: 800.998.9105 • WEB ADDRESS: www.sealtiteusa.com

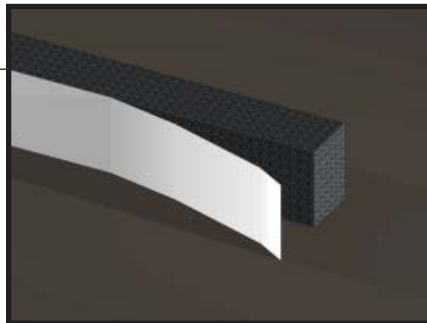
Sealant Installation (Rolls Cont.)

3. If the joint runs horizontal, begin installing the material at one side of the joint (either side) and continue to install the material working towards the opposite end. For vertical joints begin installation at the bottom of the joint and work upward.
- The installed rolls will support the subsequent rolls until the material fully expands.

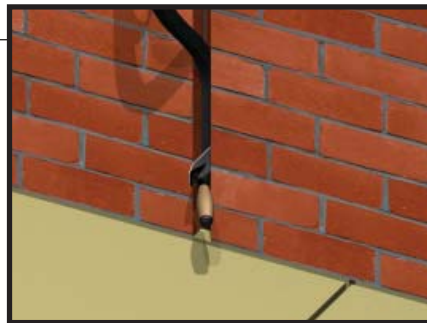


Note:
If the PSA is hampering installation, apply a small amount of isopropyl alcohol or a mist of water to the adhesive side of the material. This will not impact the final sealing properties.

4. Remove the white release liner as the material is installed.



5. Place the material into the joint while gently pushing the pressure sensitive adhesive (PSA) up against the side of the substrate. Once the material is in place, use a margin trowel to firmly press the adhesive to the substrate and allow the material to expand to fill the joint.



Note:
If the PSA is not sticking to the substrate, use wooden wedges to hold the material in place while the material expands. Once the material has expanded, the wedges can be removed.

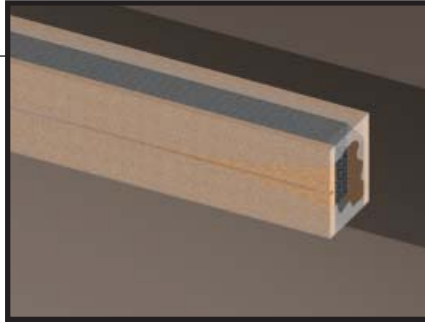
Warning:
Allow 72 hours for full expansion and material equalization. Expansion and equalization rates are affected by temperature. Material will expand faster when hot and slower when cold.

Important: These instructions are intended as recommended guidelines. Due to the variability of field conditions, selection of the proper material for the intended application and installation are the sole responsibility of the applicator. The manufacturer's published installation procedures shall be followed at all times.

SCHUL INTERNATIONAL COMPANY, LLC ONE INDUSTRIAL DRIVE, PELHAM, NH 03076
TELEPHONE: 800.848.1120 • FAX: 800.998.9105 • WEB ADDRESS: www.sealtiteusa.com

Sealant Installation (Sticks)

1. When fully prepared to install, cut the shrink packaging along the edge of the masonite strapping.



Warning:

Be prepared to install the material immediately once the packaging is removed to prevent the material from expanding past the joint width.

Tip:

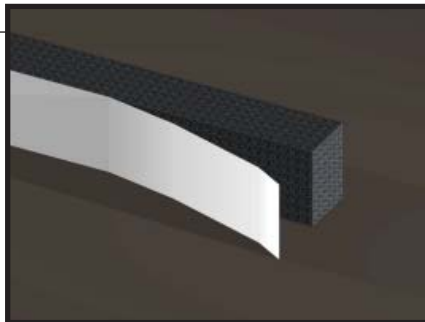
Material will expand faster when hot and slower when cold. In cold temperatures, store the material in a heated area 24 hours prior to installation. In hot temperatures, store the material out of direct sunlight and not in an enclosed storage container where temperatures may exceed 100° F.

2. Verify that the material is cut square at both ends for proper seams. All pieces must be square to the termination point.

Note:

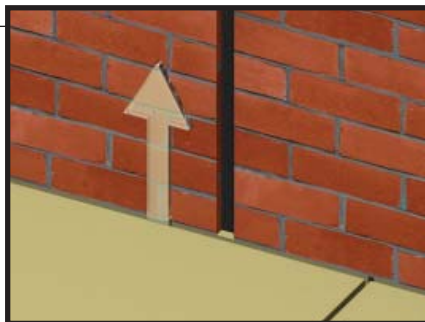
*Refer to the **Material Preparation and Seams** section for further instruction.*

3. Remove the white release liner on both sides of the Sealtite™ B.



4. For joints that run horizontal, begin installing the material at one side of the joint (either side) and continue to install the material working towards the opposite end. For vertical joints, begin installation at the bottom of the joint and work upward.

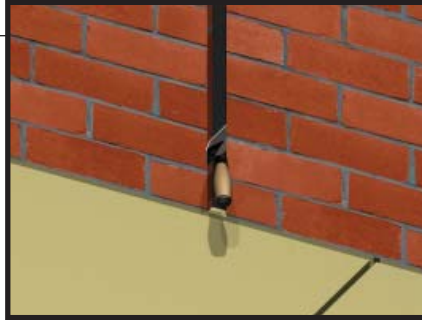
- The installed sticks will support the subsequent sticks until the material fully expands.



Important: These instructions are intended as recommended guidelines. Due to the variability of field conditions, selection of the proper material for the intended application and installation are the sole responsibility of the applicator. The manufacturer's published installation procedures shall be followed at all times.

Sealant Installation (Sticks Cont.)

5. Use a putty knife to press the material against the joint wall. This will activate the pressure sensitive adhesive (PSA) and further help to support the material during expansion.



Note:

If the PSA is hampering installation, apply a small amount of isopropyl alcohol or a mist of water to the adhesive side of the material. This will not impact the final sealing properties.

Note:

If the PSA is not sticking to the substrate, use wooden wedges to hold the material in place while the material expands. Once the material has expanded, the wedges can be removed.

Warning:

Allow 72 hours for full expansion and material equalization. Expansion and equalization rates are affected by temperature. Material will expand faster when hot and slower when cold.

Seams

Butt Seams

1. Verify that the new piece of material is cut square and not at an angle to the previous material installed.
2. Overlap extra material (approximately 1/2"-1") at seams and splices to ensure that the seam is in compression after installation.



3. "T" and "+" Intersections

- Install horizontal material first.
- Butt the vertical material up to the horizontal material following **Steps 1+2**.

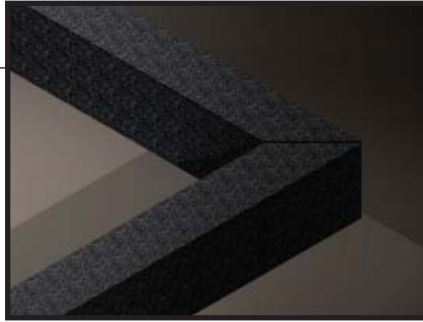


Important: These instructions are intended as recommended guidelines. Due to the variability of field conditions, selection of the proper material for the intended application and installation are the sole responsibility of the applicator. The manufacturer's published installation procedures shall be followed at all times.

Seams (Cont.)

Miter Seams

1. For joint corners, seam the material using a 45° angle cut (Refer to the **Material Preparation** section for further information).



Finish

1. Allow 72 hours for full expansion and material equalization.

Important: These instructions are intended as recommended guidelines. Due to the variability of field conditions, selection of the proper material for the intended application and installation are the sole responsibility of the applicator. The manufacturer's published installation procedures shall be followed at all times.